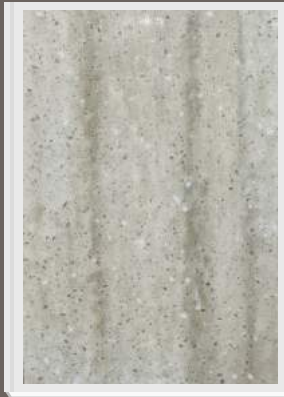




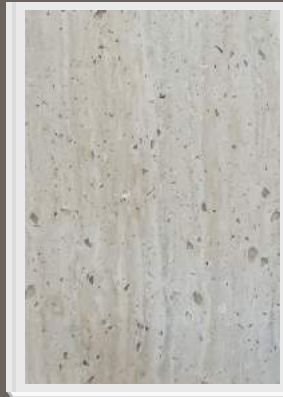
New!

## TRAVERTINE COLLECTION

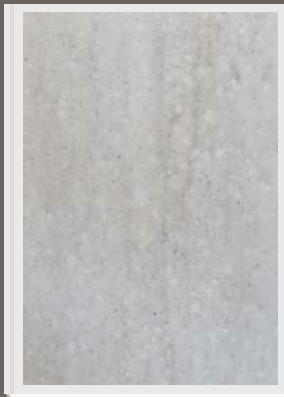
*(vein, grain and speckle patterns)*



Woodstock (TA-073)



Naturale (TA-5016)



Drizzle (TA-5001)



Caramel (TA-017)



Linear (TA-5014)

10TH EDITION CATALOGUE  
WWW.PV.COM.SG  
16 TUAS VIEW PLACE 637862  
☎ 6569 0566



**LUCRITE®**

SOLID SURFACE MATERIAL

## ONYX COLLECTION

*(vein pattern)*



Carrera Onyx (O-191)



Lignum Onyx (O-504)



Raven Onyx (O-206)



Stream (O-181)



Siberian Touch (O-108)  
*(with shining speckles)*



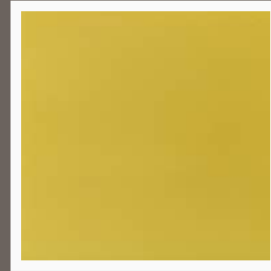
Witch Hazel (O-152)

## SOLID COLLECTION

*(plain colour only)*



Super White (P-6)



Mango (CM-202)



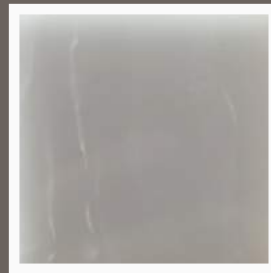
Dessert Orange (P-3003)



New Ruby Red (P-3008)

## TRANSLUCENT COLLECTION

*(Best for applications with back light)*



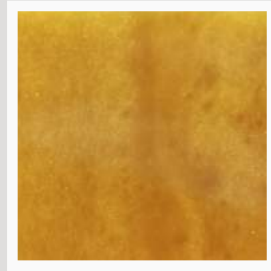
Marble Glass (T-101)

## FUSION COLLECTION

*(vein and shining speckles pattern)*



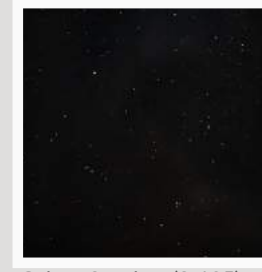
Red Copper (F-301)



Gold (F-501)

## STARDUST COLLECTION

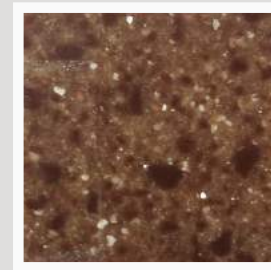
*(shining speckles pattern)*



Galaxy Stardust (S-105)



White Stardust (S-108)



Latte Stardust (S-111)

# CLASSICAL COLLECTION

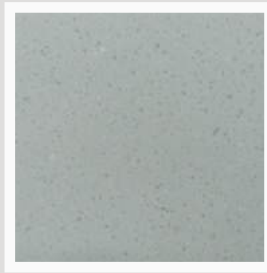
(grain and speckle patterns)



White Jasmine (M-1179)



White Sand (C-108)



Silverino (4513)



Sierra White (4514)



Snow White (NG-5)



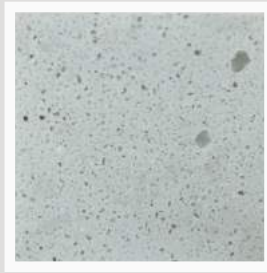
Funfair (M-1156)



Antarctica (AD-1189)



Delta Concrete (C-012)



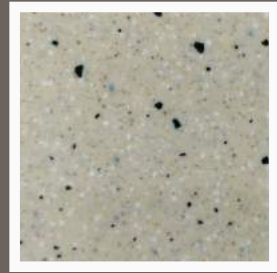
Canvas (C-271A)



Oatmeal (4515)



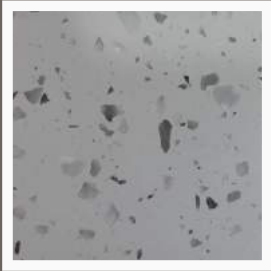
Beige Granite II (M-5512)



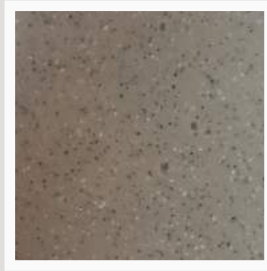
Wild Oats (M-1503)



Finesand (NG-2)



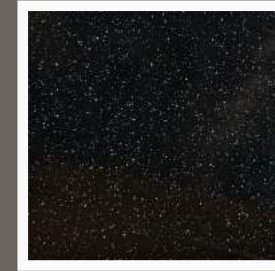
Peach Concrete (C-051)



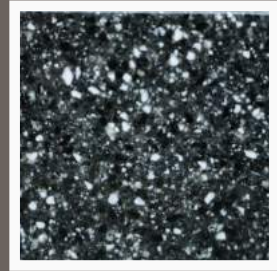
Dove (C-083A)



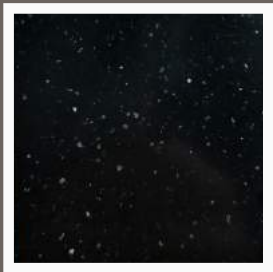
Grey Granite (G-2)



Night Shadow (M-9925)



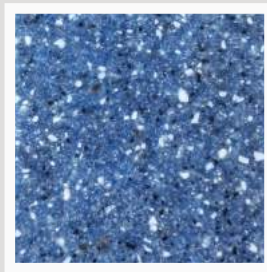
Storm (M-9853)



Night Galaxy (9933)



Sky Blue (S-602)



Ocean (M-6153)

## IMPORTANT NOTES:

- Travertine, Onyx, Fusion and Translucent Collections
  - a. It is not possible to achieve consistent repetitive pattern during manufacturing. The samples shown here do not represent the full veining pattern.
  - b. Due to the natural veining in these two collections, miter joint is recommended for "L-shaped" kitchen work top.
- Dark colours require higher maintenance.
- Customised colours can be arranged.
- Designs and Colours may vary from actual samples.